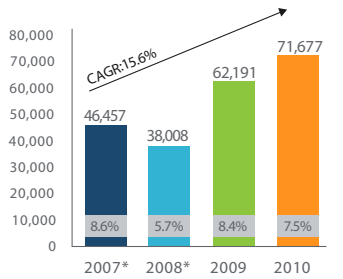




SONDA is the leading Latin America IT services company, with a deep service commitment, a broad portfolio of solutions and a large geographical coverage. We are a comprehensive IT partner, capable of taking on the most simple and specific problems through more general and complex issues, designing and implementing solutions and services aligned with our customers' business strategy.

01 NET INCOME / 2007 - 2010

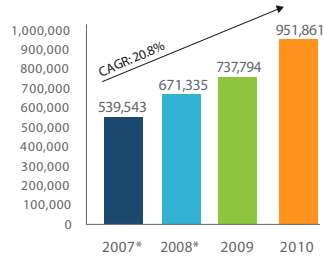
(Figures in thousands of US\$)



(*) Accounting figures according to Chile GAAP

02 CONSOLIDATED REVENUES / 2007 - 2010

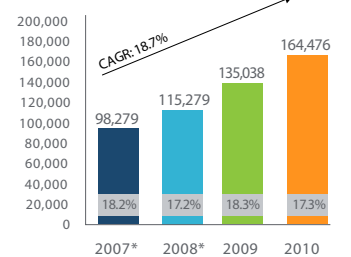
(Figures in thousands of US\$)



(*) Accounting figures according to Chile GAAP

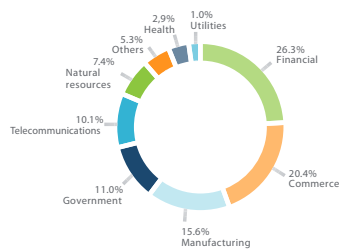
03 EBITDA / 2007 - 2010

(Figures in thousands of US\$)

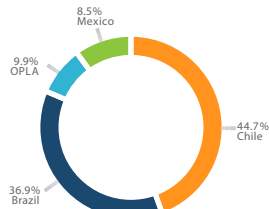


(*) Accounting figures according to Chile GAAP

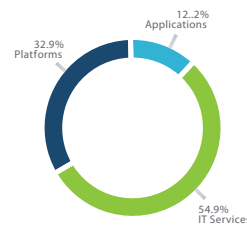
04 REVENUES BY ECONOMIC SECTOR / 2010



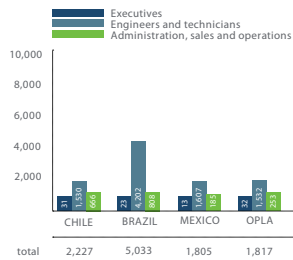
05 REVENUES BY COUNTRY / 2010



06 REVENUES BY BUSINESS LINE / 2010



07 EMPLOYEES DISTRIBUTION / 2010



08 BUSINESS LINES

- IT Services:** IT Outsourcing, Systems Integration, Infrastructure Support, Consultancy Professional Services, BPO Services, Datacenter, Cloud Computing
- Applications:** Vertical Market Solutions, Management Solutions, Applications Services
- Platforms:** Value Solutions, Infrastructure Services, Infrastructure

09 SHARE FACTS

IPO	November 2006
Market	Santiago Stock Exchange
Membership	IPSA (Blue-Chip)
Outstanding Shares	771,057,175
Dividend Policy	50%

FUNDAMENTALS:

- Solid track record of 37 years of growth and profitability.
- Solid financial position with adequate cash level and low financial debt.
- Leading position in the IT Services industry in Chile and relevant player in the most significant Latam markets: Brazil, México, Colombia, Argentina, Costa Rica, Ecuador, Peru and Uruguay.
- Near 70% of the recurring revenues from long term contracts.
- 8,000 IT professionals throughout Latin America.
- US\$ 500mm Investment Plan 2010 - 2012.
- 5 Acquisitions in 2010:
 - Brazil: Softeam, Telsinc & Kaizen
 - México: Nextira One
 - Argentina: Ceitech

OTHER RELEVANT INFORMATION:

- First IT Company in Latin America to issue a 21 year bond (2009).
- Ratings:

FITCH RATINGS	ICR - international Credit Rating
• Solvency: AA - (cl)	• Solvency: AA
• Outlook: Stable	• Outlook: Stable

ANALYST COVERAGE:

Banchile Inversiones	Andrés Álamos	IM Trust	Ignacio Spencer
BCI Corredores de Bolsa	Pamela Aunszenker	Inversiones Security	Ignacio Gálvez
Bice Inversiones	Diego Larach	Larraín Vial	Patricia Pellegrini
Celfin Capital	Tomás Gonzáles	Moneda Asset Management	Rodrigo Mora
Corp Research	Cristina Acle	Penta Inversiones	Rodolfo Tapia
Euroamérica	Ximena García	Santander GBM	Mauricio Seguel
Fitch Ratings	Francisco Mercadal - Rina Jarufe	ICR - International Credit Rating	Leonardo Sánchez - Jorge Palomas