



USE CASE

Mining



OT Maturity Assessment and Digital Transformation Solution for Mining Operational Environments

Implemented in Peru

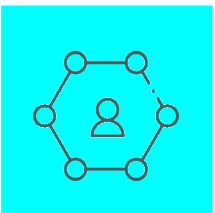
Challenge:

Address the lack of specialized internal capabilities to assess complex OT environments, identify critical cybersecurity and obsolescence risks, and align operational evolution with business strategy—balancing innovation, efficiency, and security in critical production processes.

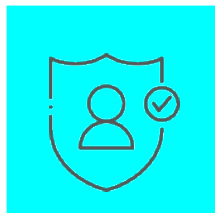
Solution:

- Conducted a comprehensive assessment of the current state (As-Is) of Operational Technology capabilities in critical industrial environments.
- Analyzed infrastructure, cybersecurity, and IT/OT integration across multiple operational units.
- Identified technological gaps, risks, and obsolescence impacting operations.
- Defined a strategic transformation roadmap aligned with medium- and long-term objectives.

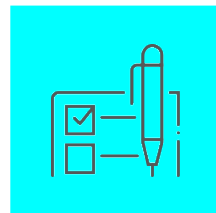
Benefits:



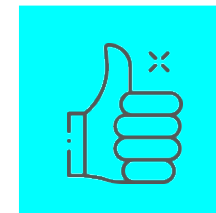
Clear and structured view of the current and **future state of OT capabilities.**



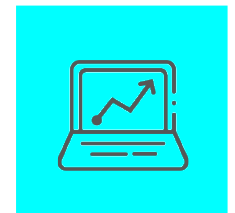
Prioritized identification of gaps in **infrastructure, processes, and cybersecurity.**



Actionable roadmap for secure **IT/OT integration and transformation.**



Increased operational efficiency and **strengthened industrial cybersecurity.**



More robust, scalable OT architecture aligned with **market standards and best practices.**

Tags: Mining; OT; IT/OT; Industrial Cybersecurity; Maturity Assessment; Strategic Roadmap; Digital Transformation; Critical Operations.