

SONDA®
make it easy

USE CASE

Smart Cities & Mobility



DESIGN, DEVELOPMENT, AND IMPLEMENTATION OF A TECHNOLOGICAL PLATFORM FOR CUSTOMS CONTROL CHECKPOINTS

Implemented in: Panamá

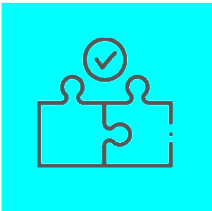
Challenges:

- **Interinstitutional integration:** Align requirements, data policies, and access levels across multiple government entities.
- **Communication among all involved entities:** Establish clear, efficient, and secure channels for operational and technical coordination between the agencies operating at control checkpoints.
- **Interoperability with legacy systems:** Connect existing platforms with modern, secure technologies.

Business objective:

- **Integrate and technologically** coordinate the entities involved in migration, customs, phytosanitary, security, and transport controls.
- **Improve traceability and control of people, vehicles,** and goods entering or leaving the national territory.
- **Increase operational efficiency at control checkpoints** through process automation and digitalization.
- **Strengthen national security and transparency** in inter-institutional management.

Solution Benefits:



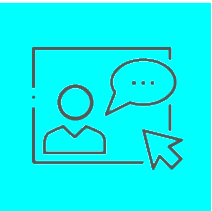
Unified and interoperable platform: Facilitates real-time coordination among Customs, Migration, and other entities.



Automates control processes and avoids multiple records across different institutions.



Enables tracking of people, vehicles, and cargo throughout their entire transit across entry and exit points.



Ensures digital recording of all operations, in compliance with international control standards.